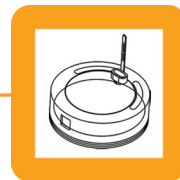


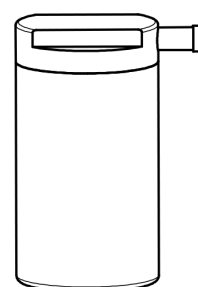
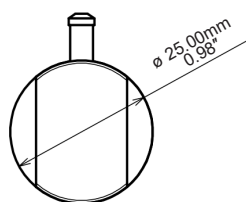
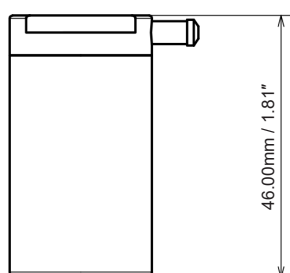
GMPPF RF 10R



Real Time Temperature Data Logger -60 to +85°C



- + Collects and transmits real time temperature to XpertLog Software
- + ITS-90 calibration coefficients are stored in the internal memory
- + Complies with FDA 21 CFR Part 11
- + Network ready: multiple users, centralized, server database, active directory authentication
- + Calibration can be performed on site
- + Can be remotely activated
- + Recommended for freeze-dryer (lyophilizer) usage



Sensor type	4 wires thin
- flexible	150 mm (6") or custom length
- sensor size	1.2 x 2.8 mm (0.05 x 0.11")
- cross section	1.13 mm ² (0.00175 inch ²)
Operating Range	
- body temp.	-60°C to +85°C
- sensor temp.	-80°C to +140°C
Accuracy	±0.1°C from -60 to +85°C
Resolution	0.01°C
Memory capacity	32,000 data points
Sampling rate	1 sec to 24 hours
Transmission	Simultaneous: maximum 20 loggers
	Sequential: unlimited
Internal clock Drift	4 sec / 24 h @ + 23 °C
Mechanical	
- material	Peek 1000 - FDA compliant
- enclosure	IP-68
- weight	24 g (0.85 oz)
- diameter	25 mm (0.98")
- height	46 mm (1.81")
Power	1 x Lithium battery, 0.35 g Lithium content classified UN3091 under IATA DGR section 3.9.2.6 compliant with ICAO/IATA packing instruction 970 user replaceable
Battery lifetime	Up to 2 months, based on usage
Antenna	Internal
Wireless range	121 m (400')
Radio frequency	2.4 GHz ISM band
Access point	USB to computer
Calibrations	Programs and reads unlimited number of loggers
	Factory: Traceable NIST / COFRAC - ITS-90 coefficients reside in the internal memory
	User: Closed loop user calibration, using XpertLog® Software
Certification	EMC: EN 60601-1-2 / 2007
	RF: EN 300440-2 v1.3.1 (2009-03)
	Health & Safety: EN 60950-1/2006

Order Reference:

GMPPF_RF_10R_4W_THIN

Standard Calibration Points

- -60°C
- 0°C
- 85°C

