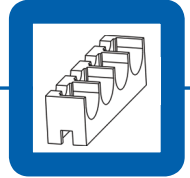


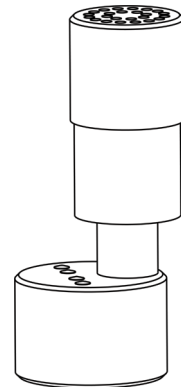
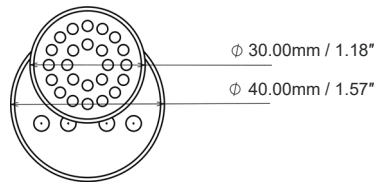
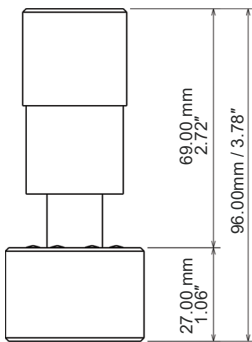
GMP P



Standard Pressure Data Logger 0.01-5.0 BarA



- + Collects and stores pressure and temperature information in the internal memory
- + Recover the data through the docking station using XpertLog Software
- + ITS-90 calibration coefficients are stored in the internal memory
- + Complies with FDA 21 CFR Part 11
- + Network ready: multiple users, centralized, server database, active directory authentication



Sensor type	Absolute pressure / Temp: 4 wires PT-100
- rigid	20 mm (0.8")
- temp. sensor size	1.5 x 8 mm (0.06 x 0.315")
- temp. cross section	1.77 mm ² (0.0027 inch ²)
Operating Range	
- pressure	0.01 BarA to 5.0 BarA
- body temp.	-40°C to +140°C
- sensor temp.	-40°C to +140°C
Accuracy	±10 mbar ≤ 3 BarA @ 130°C; ±30 mbar > 3 BarA @ 130°C ±20 mbar ≤ 3 BarA @ 23°C; ±50 mbar > 3 BarA @ 23°C ±0.1°C from -40 °C to 140 °C
Resolution	0.1 mbar; 0.01°C
Memory capacity	16,000 data points pressure / 16,000 data points temperature
Sampling rate	1 sec to 24 hours
Internal clock Drift	4 sec / 24 h @ + 23 °C
Mechanical	
- material	Peek 1000 - FDA compliant
- enclosure	IP-68
- weight	77 g (2.72 oz)
- diameter	40.0 mm (1.57")
- height	96.0 mm (3.78")
Power	1 x Lithium battery, 0.35 g Lithium content classified UN3091 under IATA DGR section 3.9.2.6 compliant with ICAO/IATA packing instruction 970 user replaceable
Battery lifetime	Up to 12 months, based on usage
Docking station	USB to computer 4, 8, 12 and 20 ports available Programs and reads unlimited number of loggers
Calibrations	Factory: Traceable NIST / COFRAC - ITS-90 coefficients reside in the internal memory User: Closed loop user calibration, using XpertLog® Software
Certification	EMC: EN 60601-1-2 / 2007 Health & Safety: EN 60950-1/2006

Order Reference:
GMP-P

Standard Calibration Points
hysteresis at 23°C and 130°C:

- 0.05 BarA
- 0.50 BarA
- 1.00 BarA
- 1.50 BarA
- 2.00 BarA
- 2.50 BarA
- 3.00 BarA
- 3.50 BarA
- 4.00 BarA
- 4.50 BarA
- 5.00 BarA

